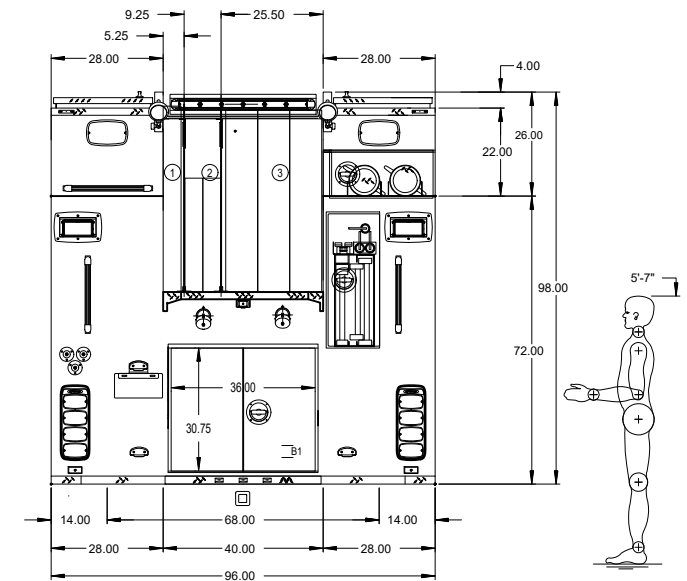
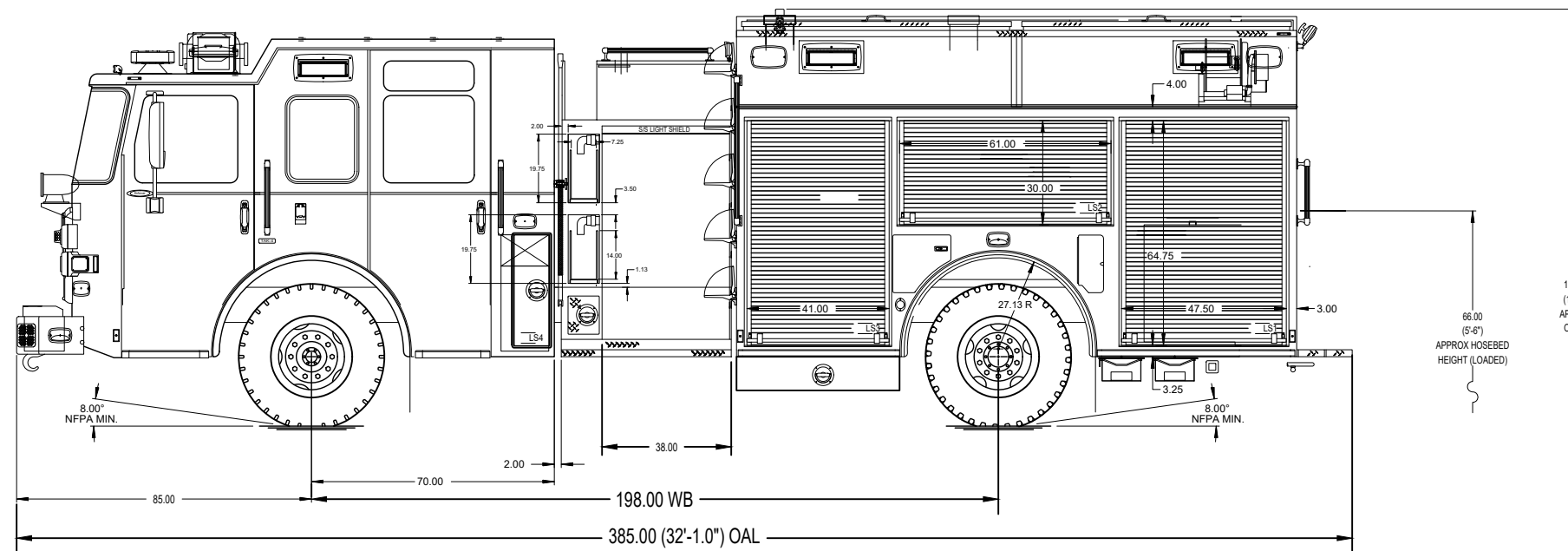


HOSEBED CAPACITIES

- ① 325' OF 2.50" D.J. POLY HOSE
- ② 400' OF 2.50" D.J. POLY HOSE
- ③ 1000' OF 5.00" D.J. POLY HOSE



NOTE
 DIMENSIONS SHOWN ARE APPROXIMATE AND ARE SUBJECT TO MINOR DEVIATIONS AS MAY OCCUR OR BE NECESSARY IN CONSTRUCTION. MINOR DETAILS NOT SHOWN.

CUSTOMER APPROVAL				
APPROVED BY:				
DATE:				
REV	DATE	BY	CH	ENFORCER

Pierce MANUFACTURING INC.

TITLE: 1500-D-750P, 730 GAL OF WATER W/ 20 GAL FOAM CELL
 161" FH FD, LADDERS THRU BODY, (2) SP. LAYS, (1) X-LAY 19FEB21

FOR: BLAUVELT FIRE COMPANY BID # 555
 FIREMATIC SUPPLY CO, INC. JEREMY COHEN

DWG NO. **Rev 5**

JOB NO.	PRELIM
SCALE	1:24
DATE	
DRAWN BY	-
CHECKED BY	-
SHEET SIZE	D
SHEET NO.	1 of 1